



# THE WORLD LEADER IN PROFESSIONAL SCRAPERS



**Glass scrapers**



**Window film scrapers**



**Paint scrapers**



**Floor scrapers**



## PRODUCT CATALOGUE

THE ORIGINAL  SCRAPER BY JBF  
– FOR PERFECT RESULTS

# About JBF

Founded around 1930, JBF originally supplied high-quality double edged razor blades primarily for the Danish market and subsequently added various shaving accessories to the product range.

When double edged razors went out of fashion in the 1960s, JBF moved on to produce a wide variety of blades for many purposes, including window scrapers. Around 1970, JBF launched its first window scraper.

Today JBF still produces blades for various specialised industries. Our in-house production and extensive expertise in blade manufacturing are entirely unique in the scraper industry – no other scraper manufacturer makes their own blades. We are still the only blade manufacturer specialising in window scraper blades.

With more than 40 years of experience in manufacturing scrapers and scraper blades for window cleaning, we provide our customers the best professional scraper products on the market. We remain committed to our mission of supplying products that help professionals work efficiently and safely.

## Product development

Our products are developed in close cooperation with the professionals who use our scrapers. We know that quality tools are essential for professionals. The right tool directly affects their ability to work quickly and efficiently and deliver bottom-line results. That's why all our scrapers are made to live up to JBF's renowned high level of quality.



**IWCA**

JBF is a proud member and sponsor of the International Window Cleaning Association ([www.iwca.org](http://www.iwca.org)). IWCA is a non-profit trade association, committed to raising the standards of professionalism and safety within the window cleaning industry.



# Contents

JBF scrapers are used for a variety of cleaning purposes. The symbols on the left show which cleaning tasks the scrapers are suited for.



Glass scraper



Paint scraper



Window film scraper



Floor scraper

TRIUMPH MK2

Page 4

TRIUMPH MK3

Page 5

TRIUMPH 2000

Page 6

TRIUMPH HEAVY DUTY

Page 6

TRIUMPH SCRAPER HOLSTER

Page 6

TRIUMPH Blades

Page 7

HANDY

Page 8

HANDY 300

Page 9

HANDY Blades

Page 9

CHAMPION

Page 10

CHAMPION BLADES

Page 10

CLICK II

Page 10

CLICK II BLADES

Page 10

SCRAPING TIPS

Page 11

QUALITY SCRAPERS  
MADE IN DENMARK





# TRIUMPH MK2 STRAIGHT

Launched in 1981, the Triumph MK2 quickly set a new standard for professional scrapers and has remained popular ever since. The Triumph MK2 is made as a single reinforced plastic casting for excellent durability. It has a 150mm scraper head to make quick work of any scraping task. The Triumph MK2 is still a favourite amongst professional window cleaners for its simplicity, lightness, durability and quality, as well as the 150mm width that makes even large scraping jobs go quickly. The scraper comes with a carbon steel blade insert as standard, along with a cover with or without a rubber squeegee insert.



TRIUMPH MK2 Straight without squeegee.

Art. no. 310-MK2-STR-149-UG-0  
Standard carton 75 scrapers



TRIUMPH MK2 Straight with squeegee.

Art. no. 310-MK2-STR-149-MG-0  
Standard carton 75 scrapers

TRIUMPH MK2 Straight with squeegee.  
Supplied on display card.  
Art. no. 310-MK2-STR-149-MG-1  
Standard carton 75 scrapers



# TRIUMPH MK2 ANGLED



The angled version of the Triumph MK2 has the head tilted forward 30°. This allows extra force to be applied on stubborn deposits and makes it easy to obtain the correct angle between the window and the scraper when it is used on an extension pole. The scraper comes with a carbon steel blade insert as standard, along with a cover without a rubber squeegee insert.



TRIUMPH MK2 Angled without squeegee.  
Art. no. 310-MK2-ANG-149-UG-0  
Standard carton 75 scrapers



# TRIUMPH MK3 STRAIGHT

The MK3 is the latest version of the industry leading Triumph series, developed in close cooperation with window professionals. Inheriting all the features and durability of the Triumph MK2, the Triumph MK3 additionally features an ergonomic rubber handle with non-slip ribs. This provides a more comfortable and secure grip on the scraper, making it well suited for prolonged use. The 150mm width reduces scraping time, even with large jobs. The scraper comes with a carbon steel blade insert as standard, along with a cover with or without a rubber squeegee insert.



TRIUMPH MK3 Straight without squeegee.

Art. no. 310-MK3-STR-149-UG-0  
Standard carton 50 scrapers



TRIUMPH MK3 Straight with squeegee.

Art. no. 310-MK3-STR-149-MG-0  
Standard carton 50 scrapers



# TRIUMPH MK3 ANGLED



The angled version of the Triumph MK3 has the head tilted forward 30°. This makes it easy to apply extra force to the scraper blade, and the ergonomic rubber handle ensures a firm, comfortable grip. All this makes the MK3 Angled the ideal tool for removing stubborn dirt or window films, even from hard-to-reach windows and glazing. The scraper comes with a carbon steel blade insert as standard, along with a cover without a rubber squeegee insert.



TRIUMPH MK3 Angled without squeegee.

Art. no. 310-MK3-ANG-149-UG-0  
Standard carton 50 scrapers



## TRIUMPH 2000

The Triumph 2000 has the safety cover built into the scraper head. The cover can easily be operated with just one hand. With all parts integrated and one-handed operation, the Triumph 2000 is ideally suited for working at height. The scraper is supplied with a 150mm carbon steel blade insert as standard.



TRIUMPH 2000.  
Art. no. 310-2000-0  
Standard carton 75 scrapers

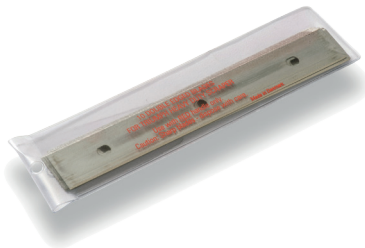


## TRIUMPH HEAVY DUTY



A heavy duty version of the original Triumph MK2 scraper, designed to use stronger and thicker 0.30mm carbon steel blades. This makes the scraper ideal for cleaning terrazzo and other smooth stone flooring. The scraper is supplied with a 0.30mm heavy duty carbon steel blade insert and a protective cover without squeegee.

Art. no. 310-MK2-HD-UG-0  
(standard carton 75 scrapers)



10 pcs TRIUMPH heavy duty blade, 0.30mm carbon steel.  
The blades are supplied in a plastic sleeve.  
Art. no. 311-149-0.30-C-10-0X  
Standard carton 100 sleeves

## TRIUMPH SCRAPER HOLSTER

The Triumph Scraper Holster is hand-made from high quality leather. The holster provides convenient belt storage for the scraper. It is fully reversible and can be worn on either side (left or right). The leather does not dull the blade, so the scraper can be holstered without the protective cover. The holster is also large enough for the protective cover.

Art. no. 310SH  
(standard carton 6 holsters)



TRIUMPH holster in action

# TRIUMPH BLADES

All Triumph blades are manufactured at our own factory in Denmark under strict quality control. We use only high quality steel exclusively from European suppliers to ensure top quality products. Over the last 40 years we have acquired extensive expertise in making the best possible blades for scrapers. We are the only blade manufacturer specifically dedicated to making scraper blades. Our many years of experience enable us to make the best blades in the industry, and our skilled craftsmen take great pride in this. All Triumph blades are razor sharp on both edges, making them very economical in use. Just reverse the blade and you have a new scraping edge ready for use. Triumph blades are supplied in a convenient blade dispenser for safe storage and disposal.



25 pcs 150mm TRIUMPH blade, 0.20mm carbon steel.

Art. no. 311-149-0.20-C-25-OX – Standard carton 100 dispensers

Art. no. 311-149-0.20-C-25-OY – Standard carton 50 dispensers

25 pcs 150mm TRIUMPH blade, 0.15mm stainless steel.

Art. no. 311-149-0.15-R-25-OX – Standard carton 100 dispensers

Art. no. 311-149-0.15-R-25-OY – Standard carton 50 dispensers

25 pcs 150mm TRIUMPH blade, 0.20mm stainless steel.

Art. no. 311-149-0.20-R-25-OX – Standard carton 100 dispensers

Art. no. 311-149-0.20-R-25-OY – Standard carton 50 dispensers

## The right blade

Triumph blades are available in both ordinary carbon steel and stainless steel. Carbon steel blades are stronger than stainless steel and will keep a sharp edge longer and stand up to rigorous use. By contrast, stainless steel blades are much less prone to rust and are inherently more flexible.

We recommend using stainless steel Triumph blades for occasional light scraping jobs and carbon steel Triumph blades for heavier cleanup and extended scraping jobs on the same day.

How to change blades





# HANDY STRAIGHT

The Handy series is a low-cost option for light, occasional use. The 80mm head is ideal for removing paint spots, small stickers and tape from windows.

The Handy series features traditional JBF quality, making it the best small scraper available and ideal for professionals, hobbyists and painters.



## HANDY STRAIGHT

Art. no. 320-STR-80-0  
Standard carton 200 scrapers



## HANDY STRAIGHT

Supplied on display card.

Art. no. 320-STR-80-1  
Standard carton 200 scrapers

*"With the Triumph MK3 Angled it takes me only half as long to remove film and lettering from windows. It is highly effective, and with the 0.20mm stainless steel blade insert I have a really good tool."*

*Bechmann Signs, Denmark*

*"Keep making a superior product!"*

*Window cleaner / USA*



# HANDY ANGLED

This angled version of the Handy has the head tilted forward 15°. The tilt provides a better working angle and makes it easier to position the scraper correctly on the glass.



## HANDY ANGLED

Art. no. 320-ANG-80-0  
Standard carton 200 scrapers

*"I have been using the Triumph 150mm scraper every day for more than 13 years and I love it. It is light, easy to change blades and attach to poles."*

*Window cleaner, Australia*





# HANDY 300

Designed for reach, the Handy 300 provides extended range with its 300mm handle – perfect for reaching the top of a window. The 15° forward head tilt ensures a good working angle.



**HANDY 300**  
Art. no. H300-80-0  
Standard carton 75 scrapers



## BLADES FOR HANDY

Handy blades are made to the renowned JBF standard of quality. All Handy blades are supplied in JBF dispensers for easy use and safe disposal of used blades. The dispenser also has a hanger tab for convenient in-store display.



5 pcs 80mm HANDY blade, 0.20mm carbon steel.  
Art. no. 321-80-0.20-C-5-0  
Standard carton 150 dispensers

10 pcs 80mm HANDY blade, 0.20mm carbon steel.  
Art. no. 321-80-0.20-C-10-0  
Standard carton 150 dispensers

25 pcs 80mm HANDY blade, 0.20mm carbon steel.  
Art. no. 321-80-0.20-C-25-0  
Standard carton 150 dispensers



# CHAMPION



With a width of 125mm, the CHAMPION is an elegant and highly popular window scraper with the angle between the blade and the glass reduced to a minimum. It is used by professionals as well as DIY enthusiasts. Champion blades are made to the renowned JBF standard of quality. All Handy blades are supplied in JBF dispensers for easy use and safe disposal of used blades.



The scraper comes with a protective cover and a stainless steel blade insert as standard.

Art. no. 350-125-0  
(standard carton 75 scrapers)



25 pcs CHAMPION blade, 0.20mm carbon steel.

Art. no. 351-125-0.20-C-25-0

Standard carton 100 dispensers

25 pcs CHAMPION blade, 0.15mm stainless steel.

Art. no. 351-125-0.15-R-25-0

Standard carton 100 dispensers



# CLICK II

Ever popular for cleaning light deposits from windows and cooktops, the Click II is widely used for small scraping tasks. Although it is not an original JBF product, we carry it to enable our dealers to offer a full range of scrapers.

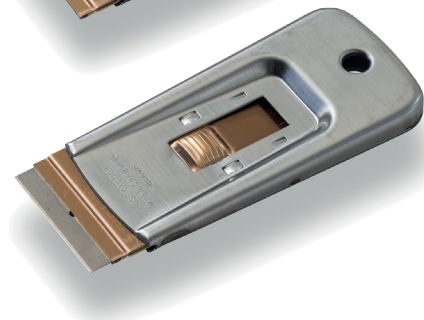
## BLADES FOR CLICK



CLICK II without blade.

Art. no. 340-0

Standard carton 200 scrapers



CLICK II with blade.

Art. no. 340-B

Standard carton 200 scrapers

5 pcs single-edge blade, supplied in a practical dispenser.



Art. no. 341-2

Standard carton 1,000 dispensers, packaged in boxes of 20 dispensers

10 pcs single-edge blade, supplied in a practical dispenser.



Art. no. 341-10

Standard carton 320 dispensers, packaged in boxes of 80 dispensers

100 pcs single-edge blade.



Art. no. 341-3

Standard carton 50 boxes, 5,000 blades

# SCRAPING TIPS



## Scraping tips

- Always scrape on wet glass, preferably using soap for better glide.
- Scrape at an angle of 30-45° to the glass.
- Do not use chipped or rusted blades. Replace the blade if it looks worn or damaged.
- The blades are extremely sharp, so use caution when handling scrapers and scraper blades.
- Approach edges slowly to avoid cutting mastic or damaging frames.
- The scraper will remove window film. To keep the film intact, avoid scraping on window film.

## How to use dispensers

- Break off the safety tab before first use.
- Slide a blade out – The dispenser safely extends one blade at a time.
- Pull the blade out.
- Deposit used blades in the slot on the back of the dispenser, to ensure that no sharp blades are left lying around.



## Changing blades

Changing the blade on a JBF scraper couldn't be simpler.

1. Press the small safety lock and push it in.
2. Pull out the blade holder from the opposite side.
3. Carefully reverse or replace the blade with the holes aligned to the pins.
4. Push the blade holder back in.



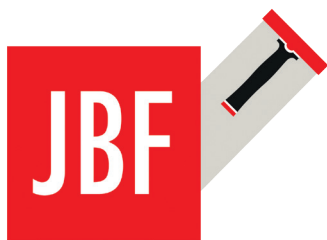
How to change blades



## JBF at a glance

- ✓ 40 years of scrapers
- ✓ In-house production
- ✓ Developed for and with professionals
- ✓ Reliable quality
- ✓ Trusted by window professionals
- ✓ Top of class for window scraper blades
- ✓ Established around 1930

**JBF A/S**  
**JYDSK BARBERBLADE-FABRIK**  
MINERLAVEJ 19  
9220 AALBORG  
DENMARK  
PHONE: +45 98 12 33 77  
FAX: +45 98 16 31 77  
JBF@JBF.DK  
WWW.JBF.DK



THE MANUFACTURER  
OF TRIUMPH SCRAPERS



JBF Presentation Video

DISTRIBUTOR: